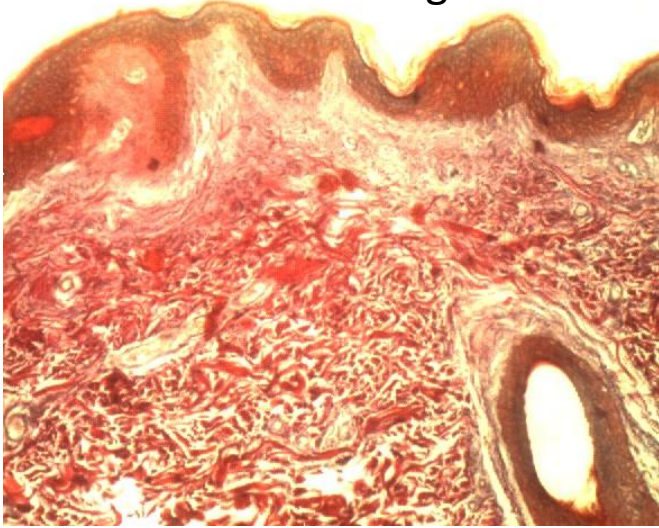


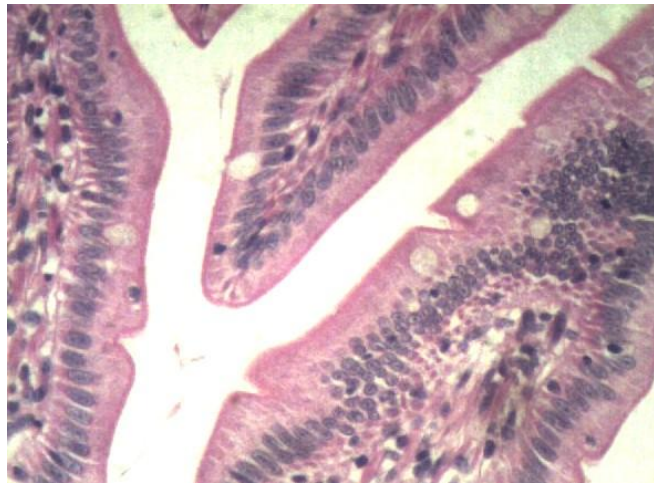
Imagens da aula 1 – Tecido Epitelial



Pele – Epitélio pavimentoso estratificado



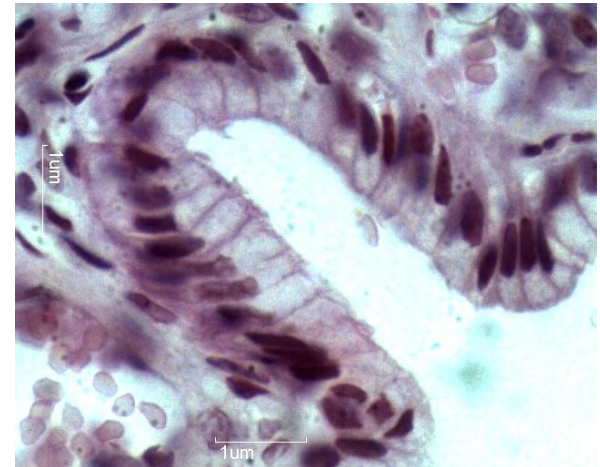
Pele – Epitélio pavimentoso estratificado



Intestino delgado – Epitélio cilíndrico simples

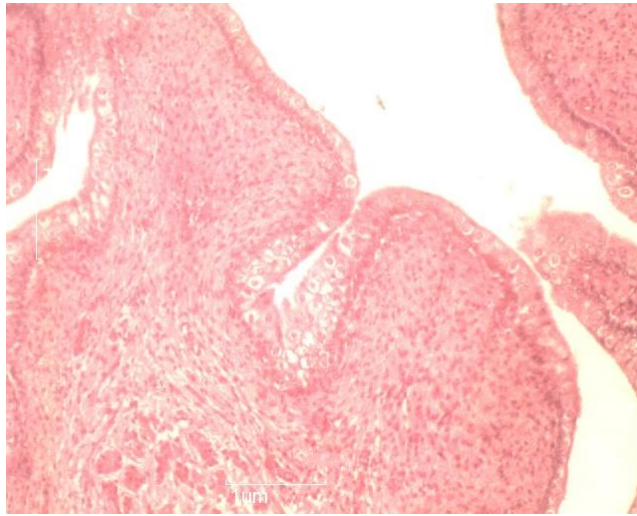


Intestino delgado – Epitélio cilíndrico simples

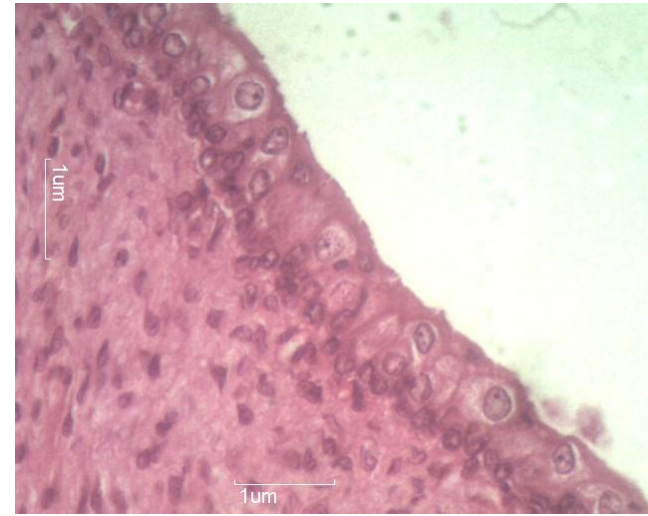


Intestino delgado – Epitélio cilíndrico simples

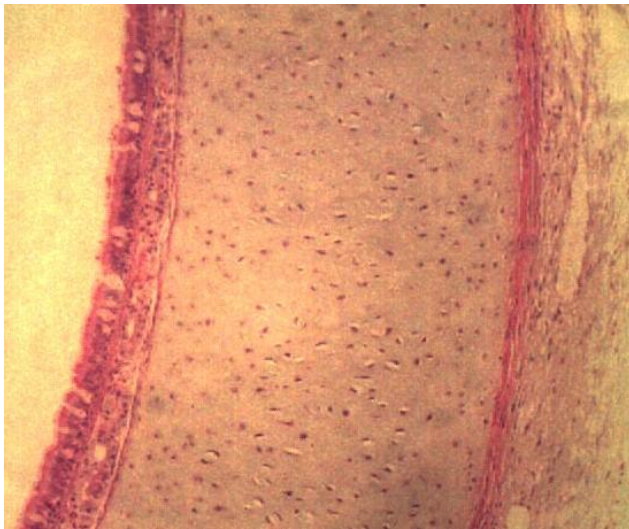
Imagens da aula 1 – Tecido Epitelial



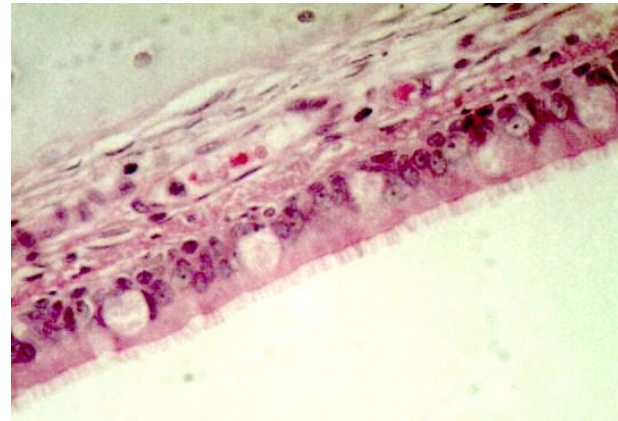
Epitélio de transição - bexiga



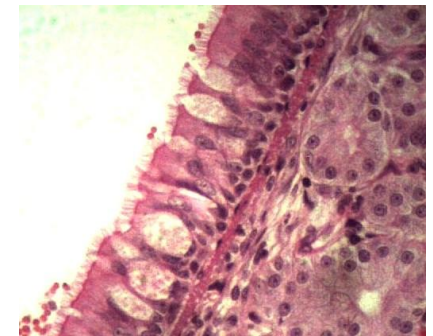
Epitélio de transição - bexiga



Epitélio pseudoestratificado cilíndrico ciliado
Traquéia

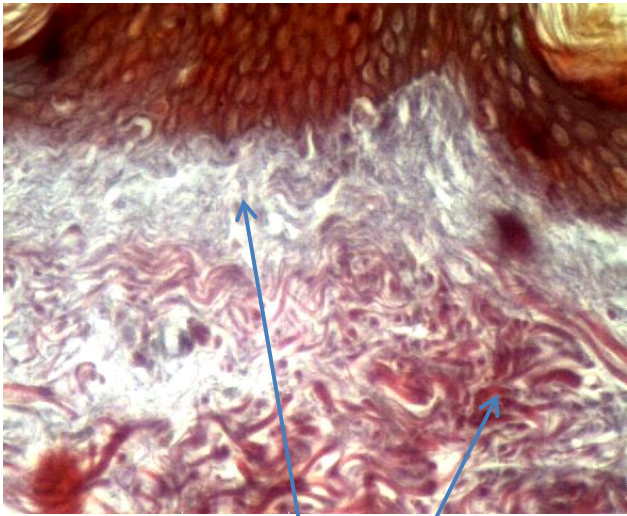


Epitélio pseudoestratificado cilíndrico ciliado
Traquéia

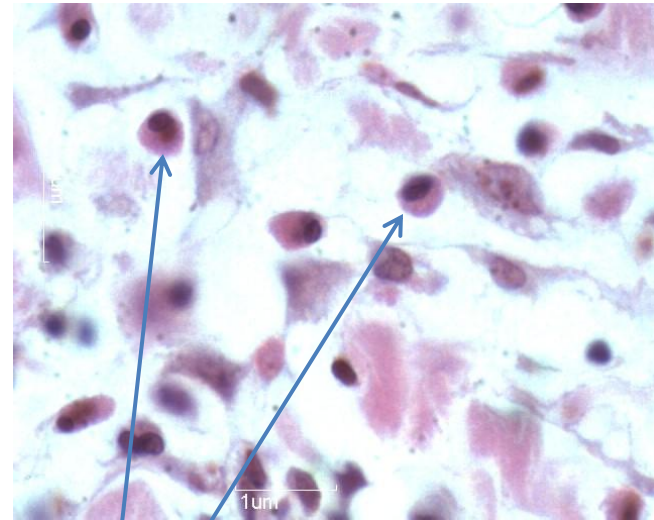


Epitélio pseudoestratificado cilíndrico ciliado
Traquéia

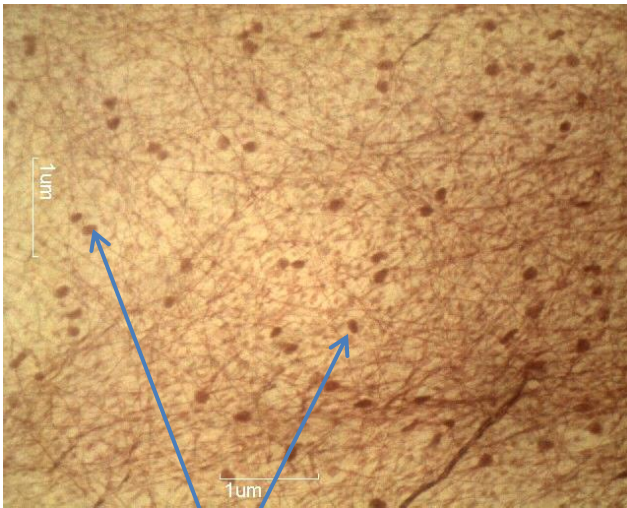
Imagens da aula 2 – Tecido Conjuntivo



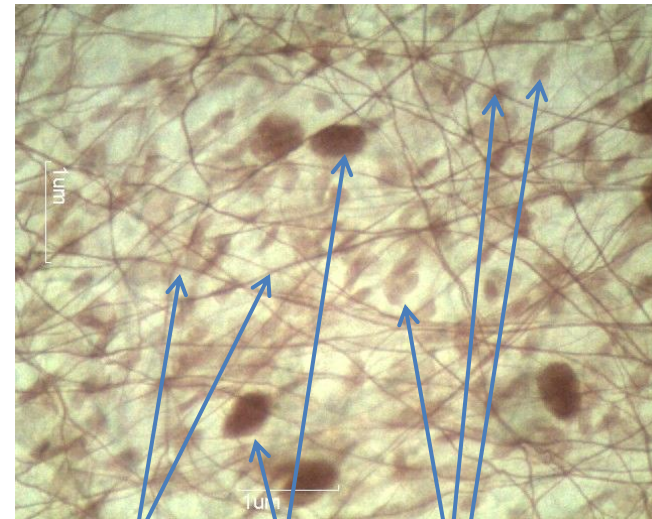
Tecido conjuntivo frouxo
Tecido conjuntivo denso não modelado



Plasmócitos

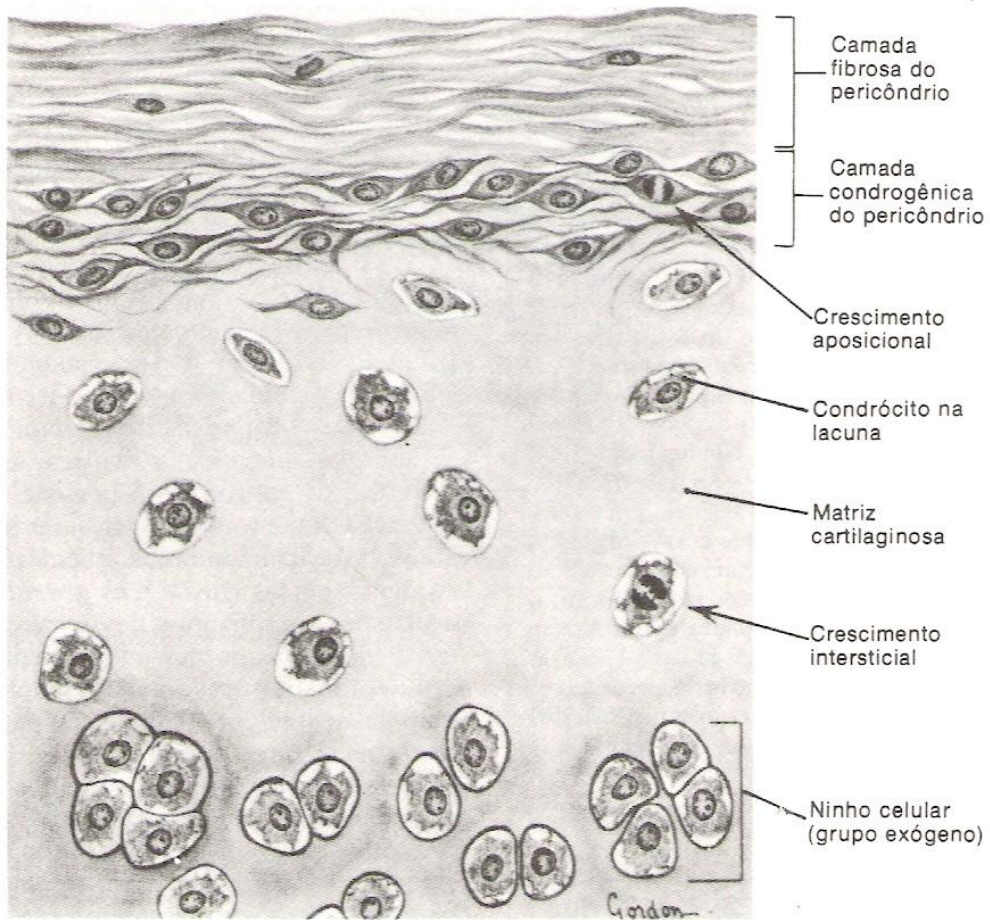


Fibras elásticas - mastócitos



Fibras elásticas – mastócitos – outras células do tec. conjuntivo

Imagens da aula 3 – Tecido Cartilaginoso

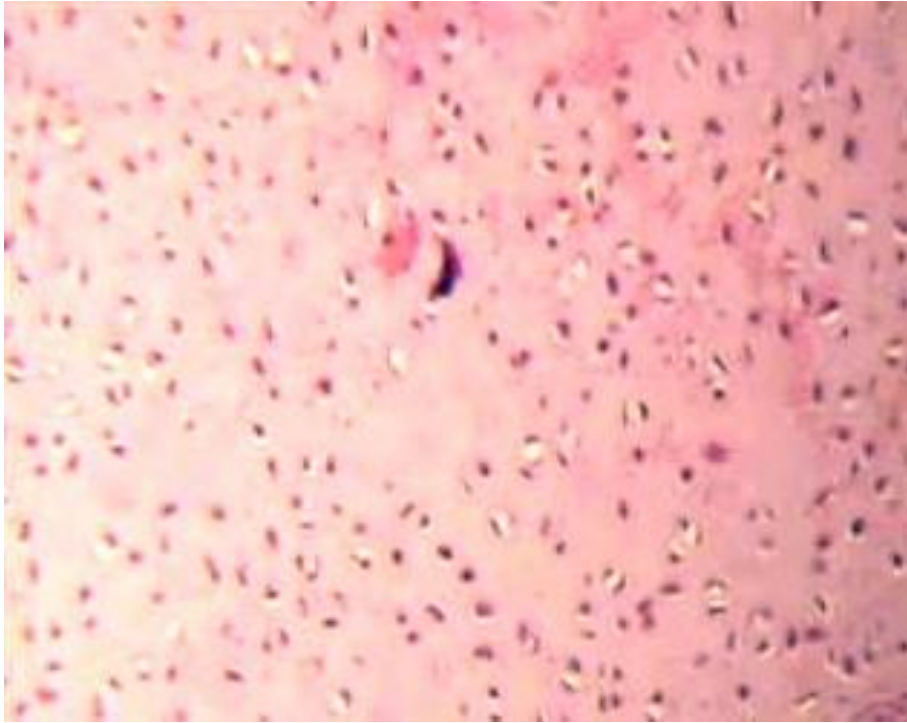


Cartilagem - esquema



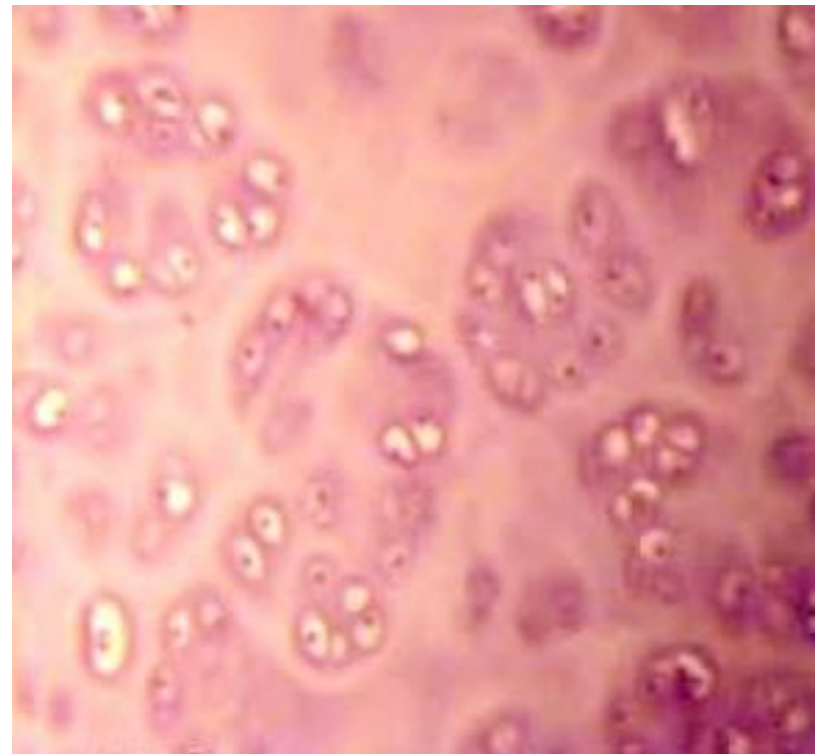
Cartilagem – HE – pequeno aumento

Imagens da aula 3 – Tecido Cartilaginoso



Cartilagem – HE – aumento médio

Cartilagem – HE



Imagens da aula 4 – Sangue

